



Seleccionar idioma



You're here:

- [Products](#) »
- [Tension Meter](#) »
- [Hand-Held, mechanical](#) »
- [Z Series](#) »
- [Model ZF2](#)

Tension Meter ZF2

7 Tension ranges from 1 - 5 cN to 10 - 100 cN

Economical mechanical tension meter for checking fibres, threads and fine wires with low tensions up to max. 100 cN

Most popular tension meter in the textile industry with analog display for low tensions

Slim filament guide with small guide rollers for limited access space



Tension meter ZF2

Special Features

- The analog display shows changing and fluctuating tensions fast and enables an optimal

process adjustment

- Filament guide and roller shifting mechanism ensure easy acquisition of the running material
- Large, easy to read scale (54 mm Ø)
- Light weight

Standard Features

- Everything in operator's view:
 - the guide rollers
 - the measured material
 - the readings
- Ball-bearing mounted, V-grooved guide rollers
- Each instrument is individually calibrated for highest accuracy
- Housing made of high-strength plastic
- Certificate of Compliance with the order 2.1 according DIN EN 10204 is included
- Optionally available: Inspection Certificate 3.1 according DIN EN 10204 with calibration report

Available Models

Model	Tension Ranges cN	Measuring Head Width* mm	SCHMIDT Calibration Material**
ZF2-5	1 - 5	43	Filament: 25 tex
ZF2-10	1 - 10	43	Filament: 25 tex
ZF2-12	1 - 12	43	Filament: 25 tex
ZF2-20	2 - 20	43	Filament: 25 tex
ZF2-30	3 - 30	43	PA: 0.12 mm Ø
ZF2-50	5 - 50	43	PA: 0.12 mm Ø
ZF2-100	10 - 100	43	PA: 0.12 mm Ø

Other tension ranges available on request.

Other units of measure available, such as g.

* Width of filament guide

** Suitable for 95 % of applications - PA = Polyamide Monofilament

Calibration to customized material:

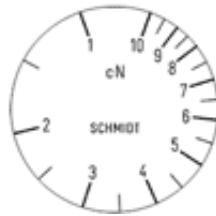
If process material differs significantly from the SCHMIDT calibration material in diameter, rigidity or shape, special calibration using customer supplied samples is recommended. For this purpose a material sample of about 5 m should be supplied.

Scales

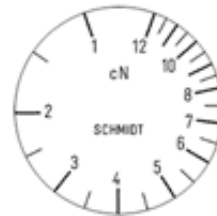
Click to get larger image



[Model ZF2 - 5](#)



[Model ZF2 - 10](#)



[Model ZF2 - 12](#)



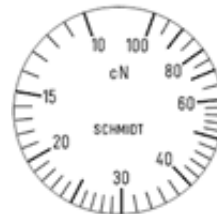
[Model ZF2 - 20](#)



[Model ZF2 - 30](#)



[Model ZF2 - 50](#)



[Model ZF2 - 100](#)

SCHMIDT scales are manufactured according to the most stringent quality requirements. Printed scales are not used. Instead, each scale is individually marked for the instrument involved. This ensures highest quality. Our special procedure makes it possible to provide tension meters

- calibrated to custom supplied material
- fine tuned to a specific tension range
- other units of measure such as g

Guide Rollers

Order-Code	Line Speed		Roller Material
	v_{max}	...m/min	
Standard	900		Hardcoated aluminium
Code K	2000		Hardcoated aluminium
Code T	450		Plastic (POM) black
Code W	450		Nickel-plated steel

Click the order-code, to get picture and drawing of the guide rollers

Spare Rollers

Click picture to get an overview for the guide rollers

Calibration Report (optional)

Inspection Certificate 3.1 according DIN EN 10204 including a calibration report is optional available

Click picture for more information

Ordering Example

To place an order	Model with tension range		Code for guide rollers (if not standard)		Complete Order No.
Please indicate the complete order number, e. g.:	ZF2-100	+	K	=	ZF2-100-K

Delivery Includes



Tension meter with carrying case, operating instruction in german or english (as requested), Certificate of Compliance with the order 2.1 according DIN EN 10204 free of charge

Dimensions

For PDF-file please
click picture

Specifications

Calibration:	According to SCHMIDT factory procedure
Accuracy:	± 1 % full scale or ± 1 graduation on scale
Scale diameter:	54 mm
Temperature range:	10 - 45 °C
Air humidity:	85 % RH, max.
Housing material:	Plastic (POM)
Dimensions:	See dimensions above
Weight, net (gross):	Approx. 200 g (600 g)

Specifications subject to change without notice!

- [Contact](#) |
- [Imprint](#) |
- [Sitemap](#)

HANS SCHMIDT & CO GMBH | Schichtstraße 16 | 84478 Waldkraiburg / Germany | Tel.: + 49 (0)8638 9410-0 | Fax: + 49 (0)8638 4825